

Installation of the Log Set

(Refer to the following images in this section for log set assembly)

1. Remove the packaging material around the log set assembly. Be careful not to damage the log set when unpacking.



Photo 4 – Burner without Log Set Detail

2. Place log 1 on the burner in its channel as shown.



Photo 5 – Log 1 in Position

3. Place Log 2 into the channel in the burner with the narrow end resting on log 1 as shown.

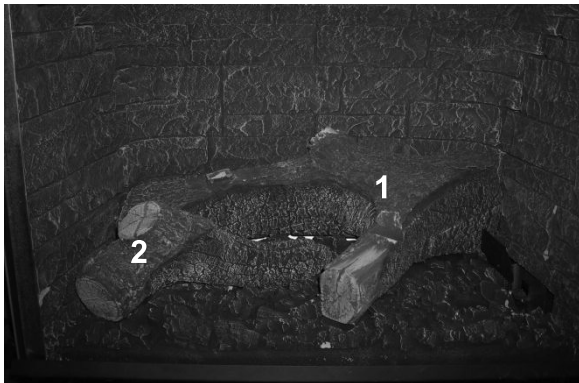


Photo 6 – Log 2 in Position

4. Place log 3 as shown.



Photo 7 – Log 3 in Position

5. Place log 4 on top of logs 1 and 2 as shown. (Note the indentation on the bottom of log 4 fits onto the nub of log 1)



Photo 8 – Log 4 in Position

6. Place small tufts of the Platinum Bright Embers on the burner and log surfaces for additional glow as desired – **do not block burner ports.**

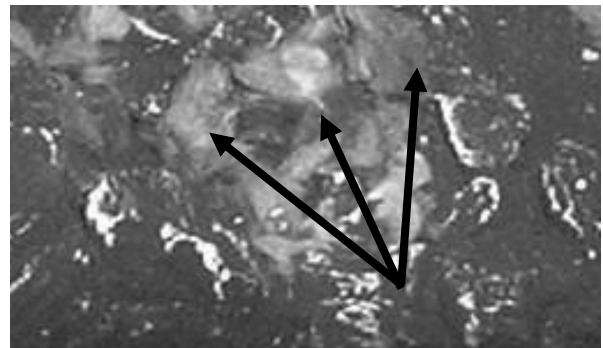


Photo 9 –Platinum Bright Embers (Enlarged to Show Detail)

Completing the Installation

1. Close the firebox – reverse the firebox access procedure outlined on page 188.

2. Install the fireplace surround (see Page 322)
3. Install any batteries as necessary. Synchronize the Remote Transmitter and Control Board (see page 38).
4. Install the façade (see page 32).

Installation of the Screen

7. To install the front glass screen you must remove the façade by lifting and pulling it away. The screen will sit over the front glass frame with its bottom edge behind the glass retainer. Hang the screen by its folded lip on top of the glass frame.

Removal of Log Set

🔥 CAUTION: THE BAFFLE, LOG SET, BURNER, AND EMBERS RETAIN HEAT AND CAN BE VERY HOT! ALLOW 2 TO 3 HOURS TO COOL AFTER PILOT LIGHT IS TURNED OFF FOR SAFE HANDLING.

To remove the log set, follow the Installation of Log Set instructions in the reverse order (see page 30).

Ceramic Burner Fissures

The ceramic burner may develop surface fissures at or after the initial burn. These fissures are normal, and have no effect on the operation, or safety of the stove.

To remove the ceramic burner for inspection:

1. First remove the log set (page 30) and baffle components (page 2929).
2. Lift the left side of the burner slightly, and move the burner to the left until it clears the orifices.
3. Carefully lift the burner out of the firebox.
4. Reverse the steps for reinstallation.
5. Ensure the tension springs (see page 344) under the air shutters are in place before reinstalling the burner.

If a crack is found that penetrates into the fuel accumulation area below the ceramic surface; discontinue operation until the stove is checked by a qualified technician.